

# Randolph, MA

## Randolph Shopping Center - 19 Memorial Parkway



**National Commercial Brokers, Inc.**  
Retail & Restaurant Real Estate Services

381 Elliot Street, Suite 185L | Newton MA 02464 | (617) 243-0222

Rob Blanchflower

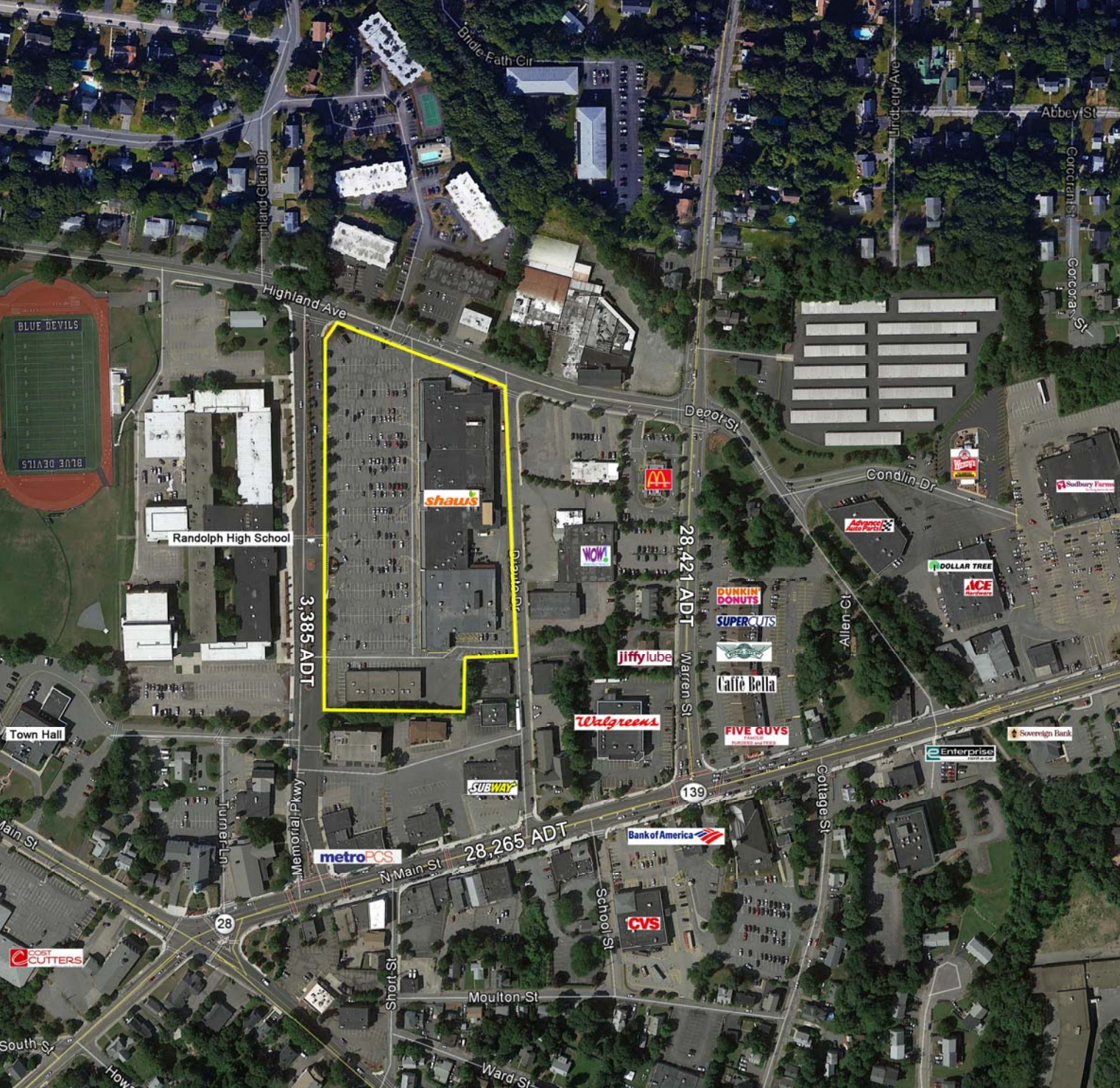
✉ [rob@nationalcommercial.com](mailto:rob@nationalcommercial.com)

☎ (617) 618-0437

Andy White

✉ [andy@nationalcommercial.com](mailto:andy@nationalcommercial.com)

☎ (617) 618-0438



## Spaces Available

- 1,500 SF (25'x60')
- 2,500 SF (25'x100') 2nd generation restaurant
- 5,000 SF (50'x100')
- 14,709 SF
- GLA: 102,500 SF
- Within close proximity to Route 24
- Randolph H.S. across the street



Latitude: 42.163398

Longitude: -71.043759

## Demographics

	Pop	Day Pop	MHI
1 Mile	16,655	4,213	\$67,558
3 Miles	60,222	24,588	\$80,920
5 Miles	160,964	90,043	\$83,143
7 Miles	384,224	189,969	\$84,496



**National Commercial Brokers, Inc.**  
Retail & Restaurant Real Estate Services

381 Elliot Street, Suite 185L | Newton MA 02464 | (617) 243-0222

Rob Blanchflower

✉ rob@nationalcommercial.com

☎ (617) 618-0437

Andy White

✉ andy@nationalcommercial.com

☎ (617) 618-0438