

Randolph, MA

Gateway Plaza - 1395 North Main Street



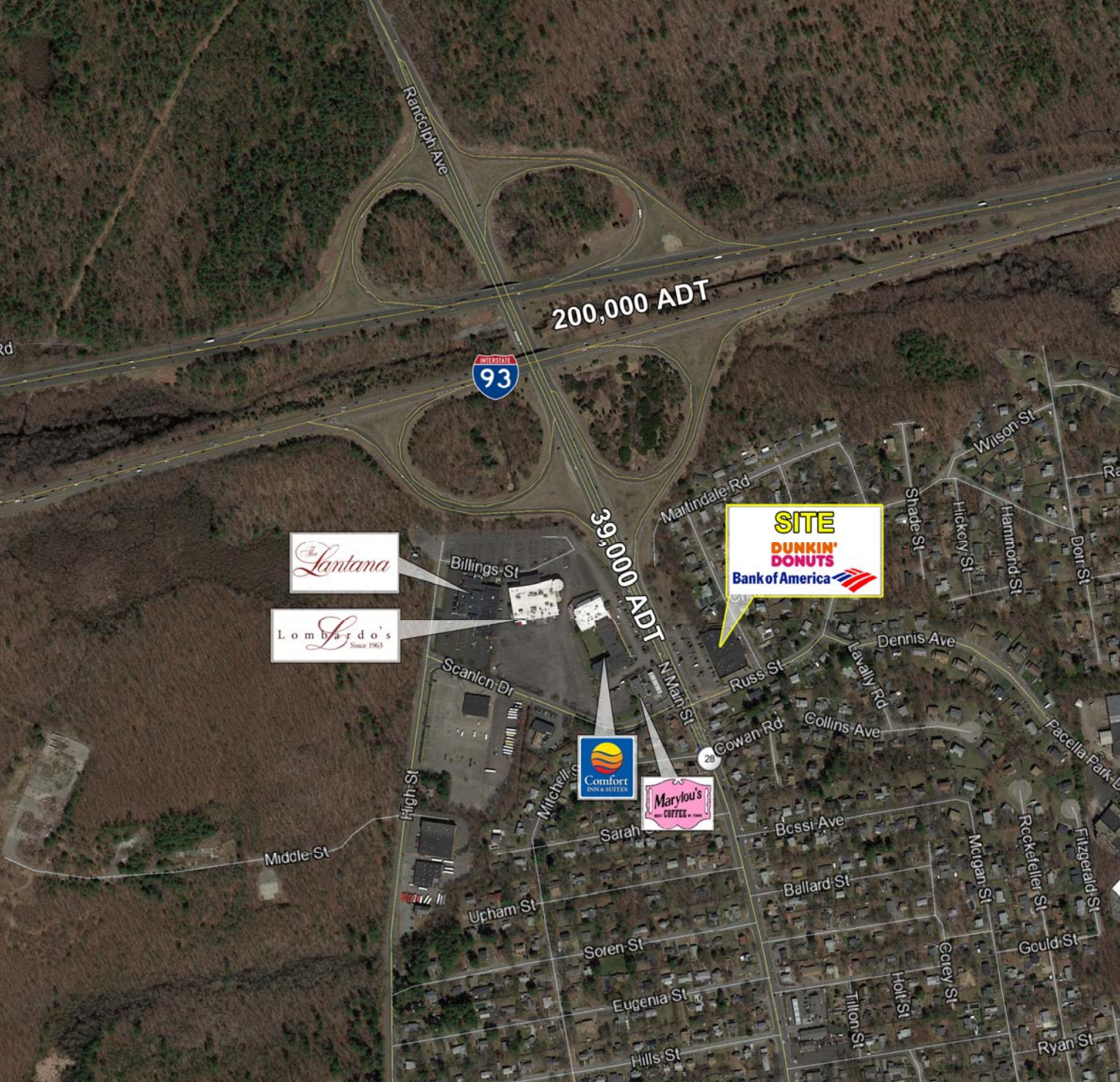
National Commercial Brokers, Inc.
Retail & Restaurant Real Estate Services

381 Elliot Street, Suite 185L | Newton MA 02464 | (617) 243-0222

Brian Nadler

✉ brian@nationalcommercial.com

☎ (617) 243-0273



- Located at a signalized intersection on Route 28
- Exit 5A off Interstate 93 with great visibility.
- Co-tenants include AT&T, Dunkin' Donuts, La Novita, Aqua Dental, Bank of America and more. Area retailers include Holiday Inn, Lombardo's and more.



Demographics

	Pop	Day Pop	MHHI
1 Mile	5,664	2,435	\$88,353
3 Miles	43,025	30,962	\$85,882
5 Miles	210,058	108,353	\$90,010
7 Miles	529,108	213,897	\$82,191



National Commercial Brokers, Inc.
Retail & Restaurant Real Estate Services

381 Elliot Street, Suite 185L | Newton MA 02464 | (617) 243-0222

Brian Nadler
 brian@nationalcommercial.com
 (617) 243-0273